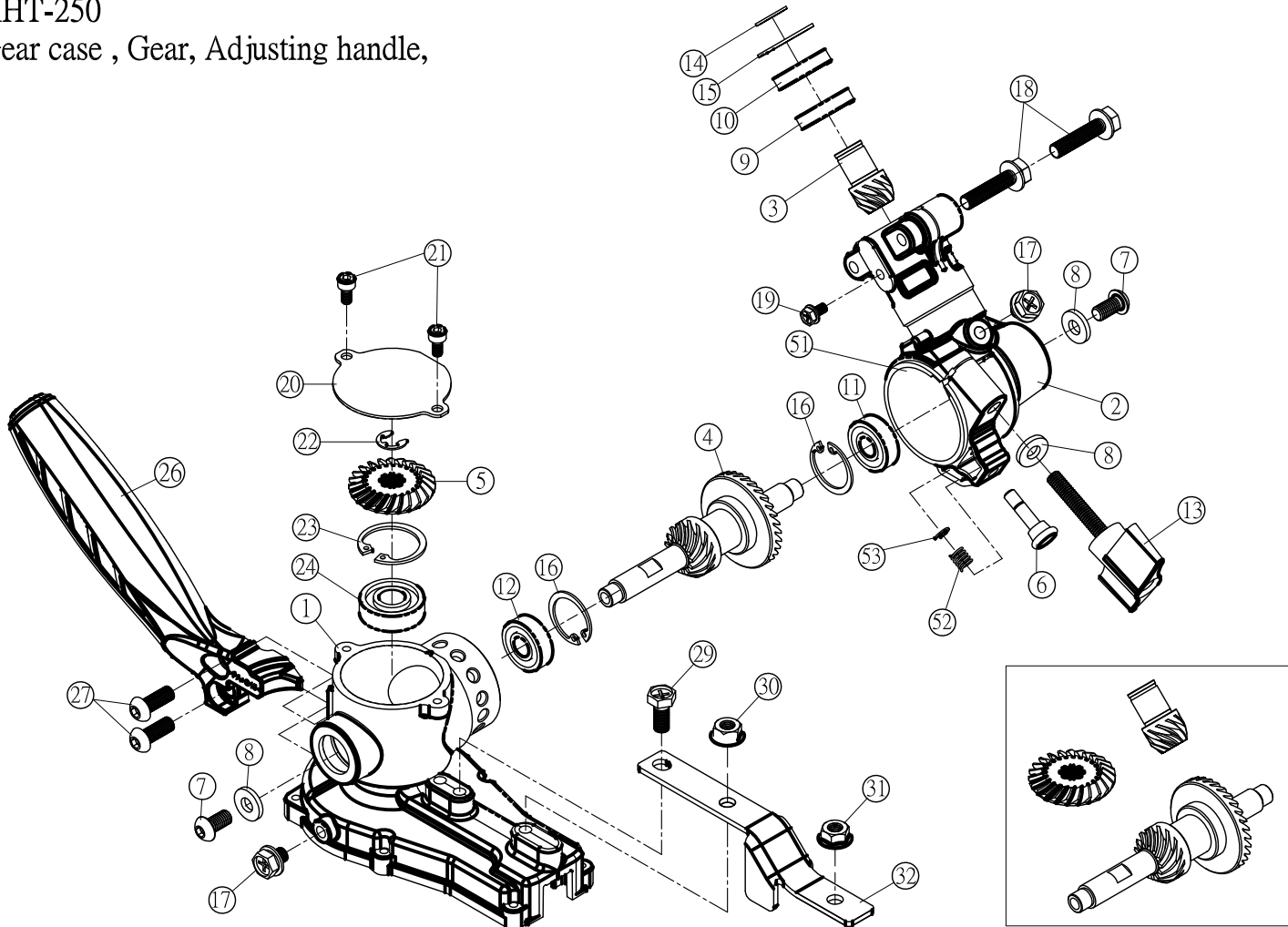


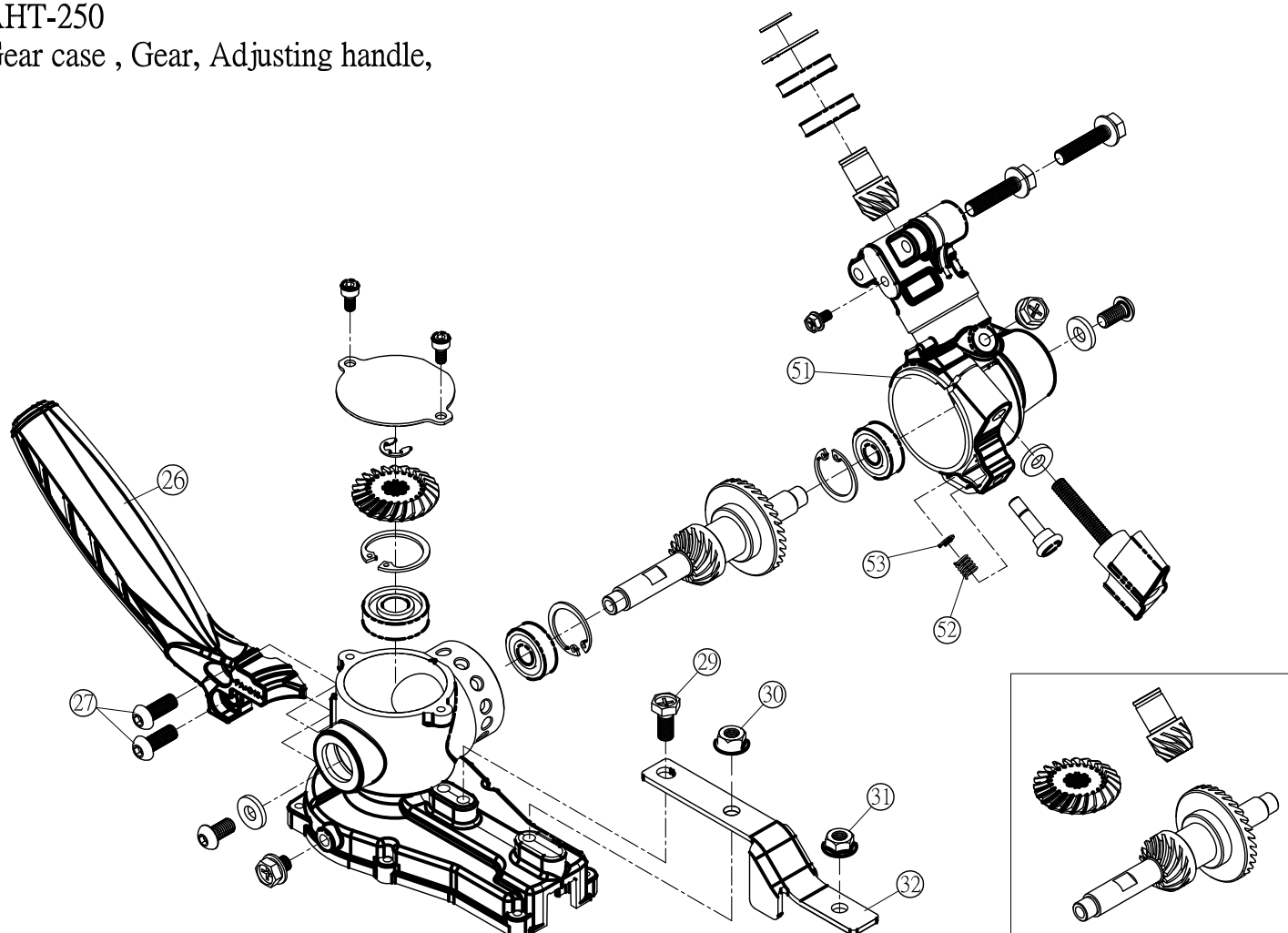
AHT-250
Gear case , Gear, Adjusting handle,



1/3

NO.	Cosmos No	Part Name	品名	Q'ty	Price(\$)	Note
1	BHT16-2601	GEAR HOUSING	齒輪箱本體	1	14.0	
2	BHT01-2401/2601	GEAR CASE	機頭外殼	1	4.5	
3	BHT351-250	BEVEL PINION	螺旋齒輪軸	1	3.5	
4	THT01-2401	BEVEL GEAR SHAFT COMP.	螺旋齒輪軸心組	1set	9.0	
5	BHT352-250	BEVEL GEAR	螺旋傘齒輪	1	4.5	
6	BG061-250W	HOLDING PIN	拉鈕	1		
7	XAB612	SCREW ,HEX HOLE 6X12	半圓頭內六角螺絲,M6X12	2	0.15	
8	XWB1465	WASHER,D=14.4*6.5	華司 ,D=14.4*6.5*1.6t	3	0.1	
9	Z6901ZZ	BALL BEARING 6901ZZ	軸承,6901ZZ	1	0.8	
10	Z6901ZZ	BALL BEARING 6901ZZ	軸承,6901ZZ	1	0.8	
11	Z608UU	BALL BEARING 608UU	軸承,608UU	1	1.0	
12	Z608UU	BALL BEARING 608UU	軸承,608UU	1	1.0	
13	BHT36-250	KNOB,HANDLE	一字型旋鈕,M6X35	1	0.5	
14	R-IS12	C-SANP RING R-IS12	C型扣環,IS-12 軸用	1		
15	R24	C-SANP RING R24	C型扣環,R24孔用	1	0.1	
16	R22	C-SANP RING RTW22	C型扣環,RTW22孔用	2	0.1	
17	XGW-68	HEXAGON BOLT M6X8	六角頭注油螺絲,M6X8	2	0.1	
18	XGW628SPWS	HEXAGON BOLT M6x28 SPWS	六角十字螺絲,M6X28	2	0.1	
19	XGW510SPWS	HEXAGON BOLT M5x10 SPWS	六角十字螺絲,M5X10	1		
20	BHT20-250-76	COVER, GEAR HOUSING	齒輪箱蓋	1	0.4	
21	XAA48	BOLT,HEX. M4X8	內六角螺絲,M4X8	2	0.1	
22	R-E6	E RING,E6	E型扣環, E6	1		
23	R26	C-SANP RING RTW26	C型扣環,RTW26孔用	1	0.1	
24	Z6000	BALL BEARING 6000	軸承,6000	1	1.0	

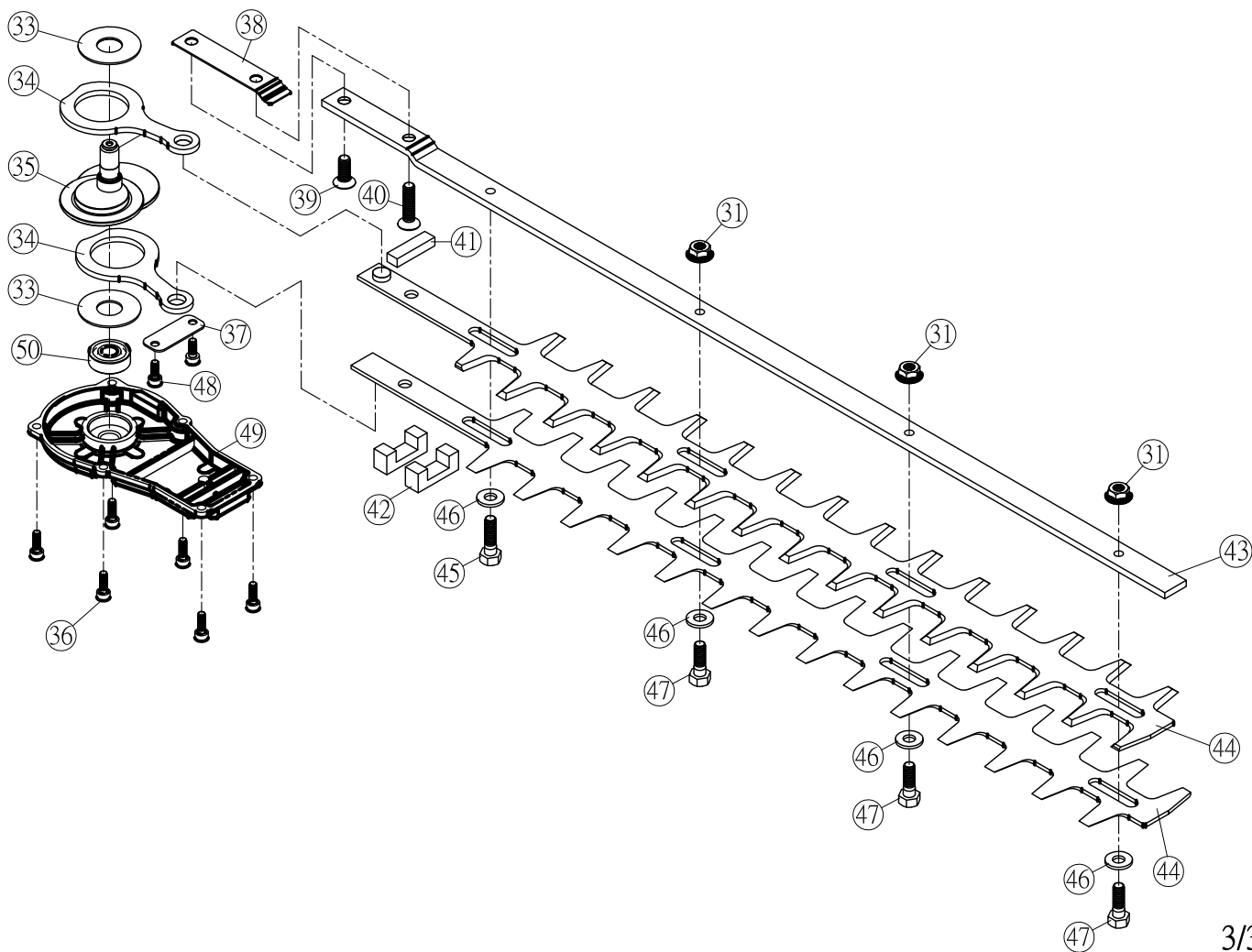
Gear case , Gear, Adjusting handle,



2/3

[illegible]

AHT-250 Blade/590mm ,Cutter guade



3/3

NO.	Cosmos No	Part Name	品名	Q'ty	Price(\$)	Note
31	XUW6	FLANGE NUT,M6	法蘭U型六角盤帽,M6	3	0.2	
33	BHT03-250	PLATE , GUIDE	間隔導板圓片	2	0.2	
34	BHT02-250	ROD , CAM	凸輪連桿	2	3.5	
35	BHT45-250	CAM SHAFT	凸輪軸	1	14.5	
36	XAA412	SOCKET BOLT M4X12	內六角螺絲,M4X12	6	0.1	
37	BHT11-250	FIXING PLATE	定位板	1	0.4	
38	BHT23-250	SPACER	間隔板	1	0.5	
39	XPB616	BOLT,HEX M6X16	錐形內六角螺絲,M6×16	1	0.1	
40	XPB625	BOLT,HEX M6X25	錐形內六角螺絲,M6×25	1	0.1	
41	BHT22-250	SEAL GREASE ,PLATE	羊毛氈平面油封	1	0.3	
42	BHT10-250	SEAL GREASE ,A	羊毛氈凹型油封	2	0.4	
43	BHT04-490	CUTTING GUIDE	刀片導板	1	7.0	
44	BL-450	BLADE , 380mm	刀片,450mm	2	13.0/pc	
43	BHT04-626	CUTTING GUIDE	刀片導板	1	7.5	
44	BL-590	BLADE , 540mm	刀片,590mm	2	15.0/pc	
45	XCB622	HEXAGON BOLT M6x22	六角頭定位螺絲,M6×22	1	0.4	
46	XWB72	WASHER , d=7.2mm	華司 ,d=7.2mm	4	0.1	
47	XCB6195	HEXAGON BOLT M6x19	六角頭定位螺絲,M6×19	3	0.4	
48	XAA412SP	SOCKET BOLT M4X12SP	內六角螺絲,M4X12SP	2	0.1	
49	BHT15-2601	COVER , GEAR CASE	齒輪箱下蓋	1	3.0	
50	Z608-NTN	BALL BEARING 608	軸承,608	1	1.0	